

## What is Showtime?

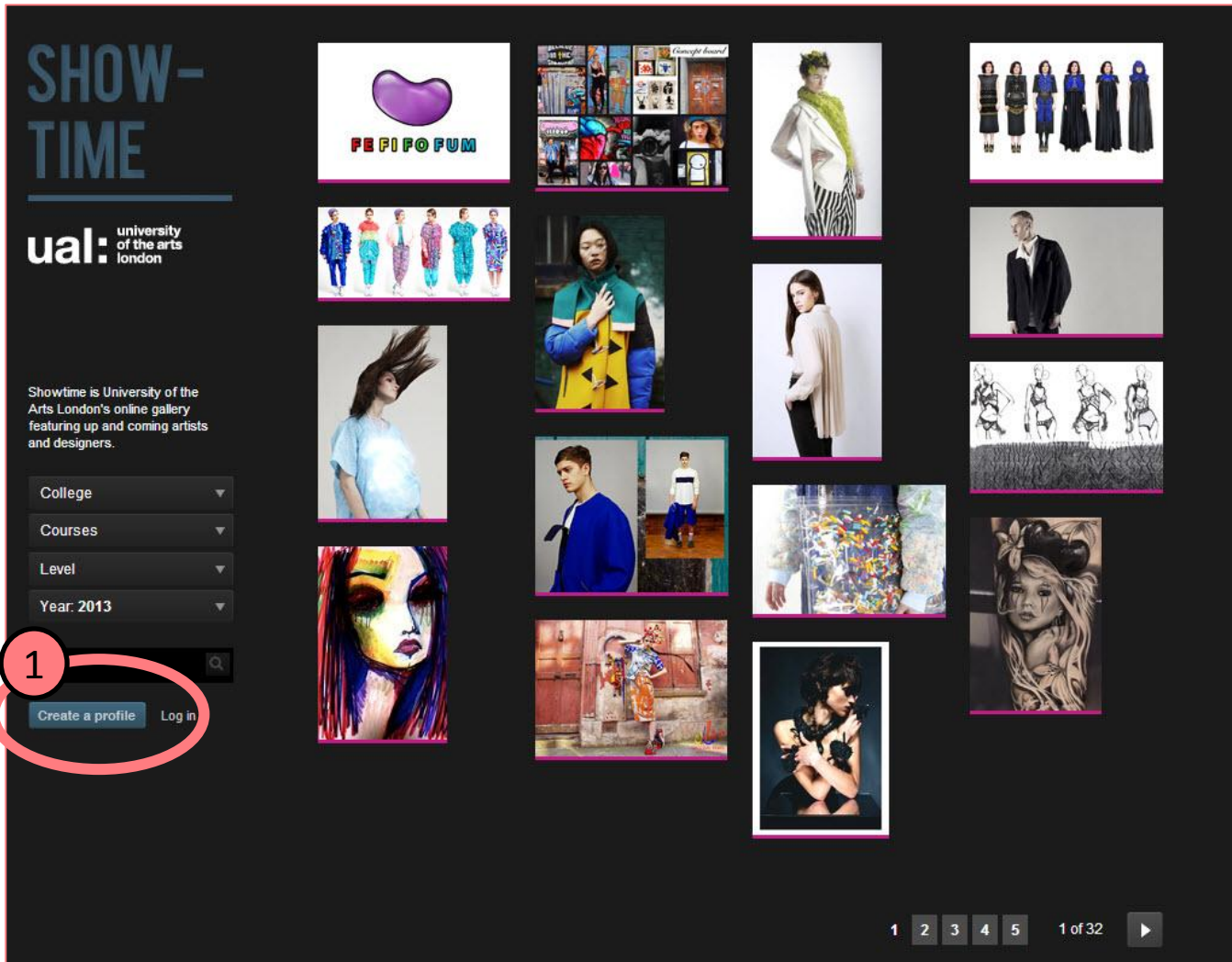
- Showcase for your degree show as well as provides additional info about you and your work
- Super easy to upload images and video

## Some uses:

- **Show your work that is exhibited in degree show**
- **Show additional work** you've done in your final year
- Gain opportunities (to exhibit or collaborate) after graduation
- Upload images and/or video of your work
- Point potential opportunities to your personal website
- Provide contact details after graduation

*Sign up - Create a profile*

<http://showtime.arts.ac.uk>



1. On Showtime website  
Click **Create a Profile** button.

# Register your details

<http://showtime.arts.ac.uk>

1. Enter your details > Click **Go** button
2. Enter student number > Click **Go** button
3. If you can Confirm > Click **Yes** button

*You are now registered and logged in to Showtime.*

ual: university  
of the arts  
london

## Register your details

The information you complete here will be the information on your profile page.

Name:

Kristin Franclemont B

Email:

kelise@kelise.co.uk

Course:

BA (Hons) Fine Art: Painting

Screen name - this will form your Showtime URL (e.g. [showtime.arts.ac.uk/screenname](http://showtime.arts.ac.uk/screenname)):

kelisefranclemont

About me and my work:

Drawing is the primary instrument in my multi-disciplinary practice, along with other means of expression such as animation, installation and object-making. Key areas of interest include relationships; those defined by duality as well as possible spaces in between.

Interact in such things as division/separation and The

Password

Password Confirm

Go

ual: university  
of the arts  
london

2

## Register your details

Please enter your student number

Go

[Already got an account? Log in now!](#)

© University of the Arts London 2013 | [Showtime](#)

ual: university  
of the arts  
london

3

## Please confirm

We think you're Kristin Franclemont Butler at Wimbledon College of Art.

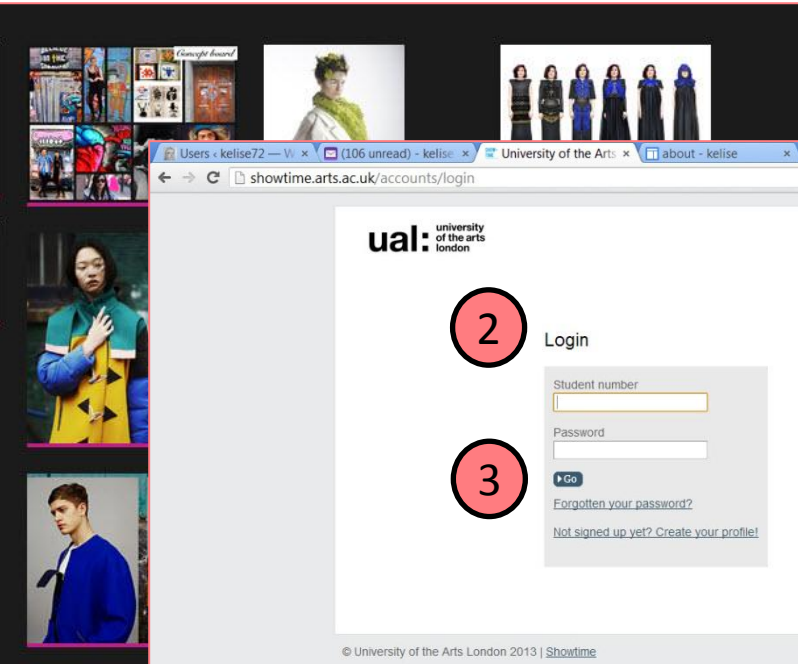
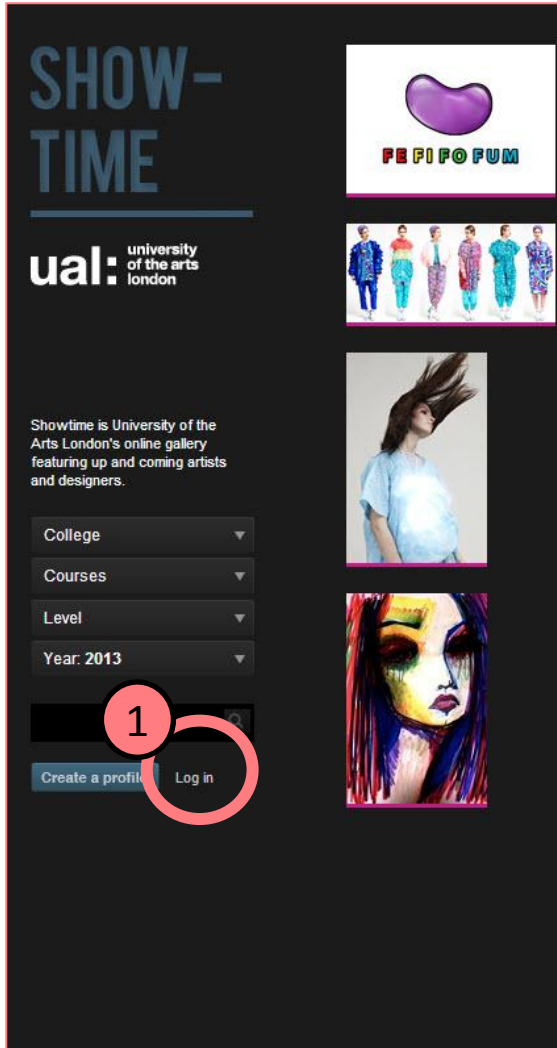
Is this you?

Yes

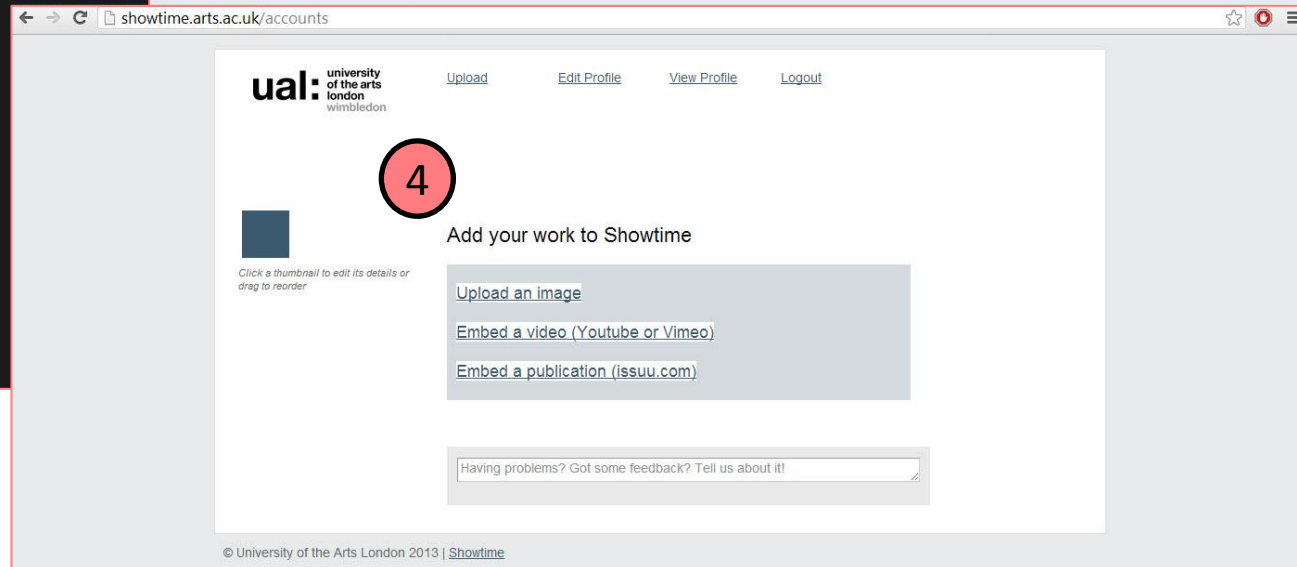
No

# Log in

<http://showtime.arts.ac.uk>



1. On Showtime website Click **Login** button.
2. Enter your student number and password (created on sign up)
3. Click **Go** button
4. You are logged into Showtime



# Edit Profile

<http://showtime.arts.ac.uk>



Click a thumbnail to edit its details or drag to reorder

1

## Edit your profile

The information you provide here will appear on your profile page.

Name:

Email:

Course:

Screen name - this will form your Showtime URL (e.g. [showtime.arts.ac.uk/screenname](http://showtime.arts.ac.uk/screenname)):

About you and your work:

Drawing is the primary instrument in my multi-disciplinary practice, along with other means of expression such as animation, installation and object-making. Key areas of interest include relationships; those defined by duality as well as possible spaces in between.

Interest in such things as division/cohesion and The

Profile type:

☒ Slideshow ☐ Masonry

Slideshow options:

☐ Light ☐ Dark

If you want to change your password, enter a new one below:

New password

Confirm new password

2

Save

Cancel

Logged into Showtime

1. Enter/change your details
2. Click **Save** button

# Upload an Image

<http://showtime.arts.ac.uk>

ual: university of the arts london wimbledon

[Upload](#)

[Edit Profile](#)

[View Profile](#)

[Logout](#)



Click a thumbnail to edit its details or drag to reorder.

## Upload your work

1

File

[Choose File](#)

Taxi\_drivers...nshot01.jpg

You can upload an image of any size but it needs to be at least 100 pixels wide or tall.

Title

screenshot of 'taxi driver dialog'

This title describes your image and will be displayed as a caption alongside your image on the website.

Tags

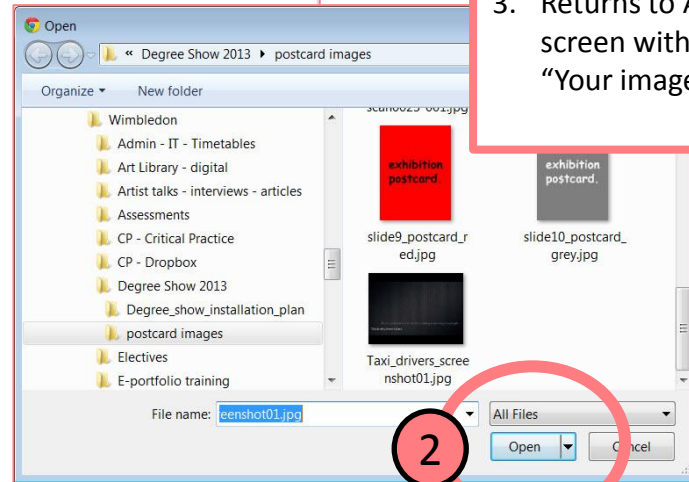
ual, sound art, Palestine, Israel

Separate multiple tags with commas e.g: art, graphic design

☐ Select if you would like this to be your main image to represent your work on Showtime.

[Upload](#)

Having problems? Got some feedback? Tell us about it!



## Logged into Showtime

1. Click **Choose File** button
2. In files pop-up box, click to choose an image from hard-drive, then click **Open** button
3. Returns to Add your work to Showtime screen with **confirmation message**, "Your image is being processed"

ual: university of the arts london wimbledon

[Upload](#)

[Edit Profile](#)

[View Profile](#)

[Logout](#)

Click to refresh

Click a thumbnail to edit its details or drag to reorder.

3

## Add your work to Showtime

✓ Your image is being processed, you will receive an email when it is ready!

[Upload an image](#)

[Embed a video \(Youtube or Vimeo\)](#)

[Embed a publication \(issuu.com\)](#)

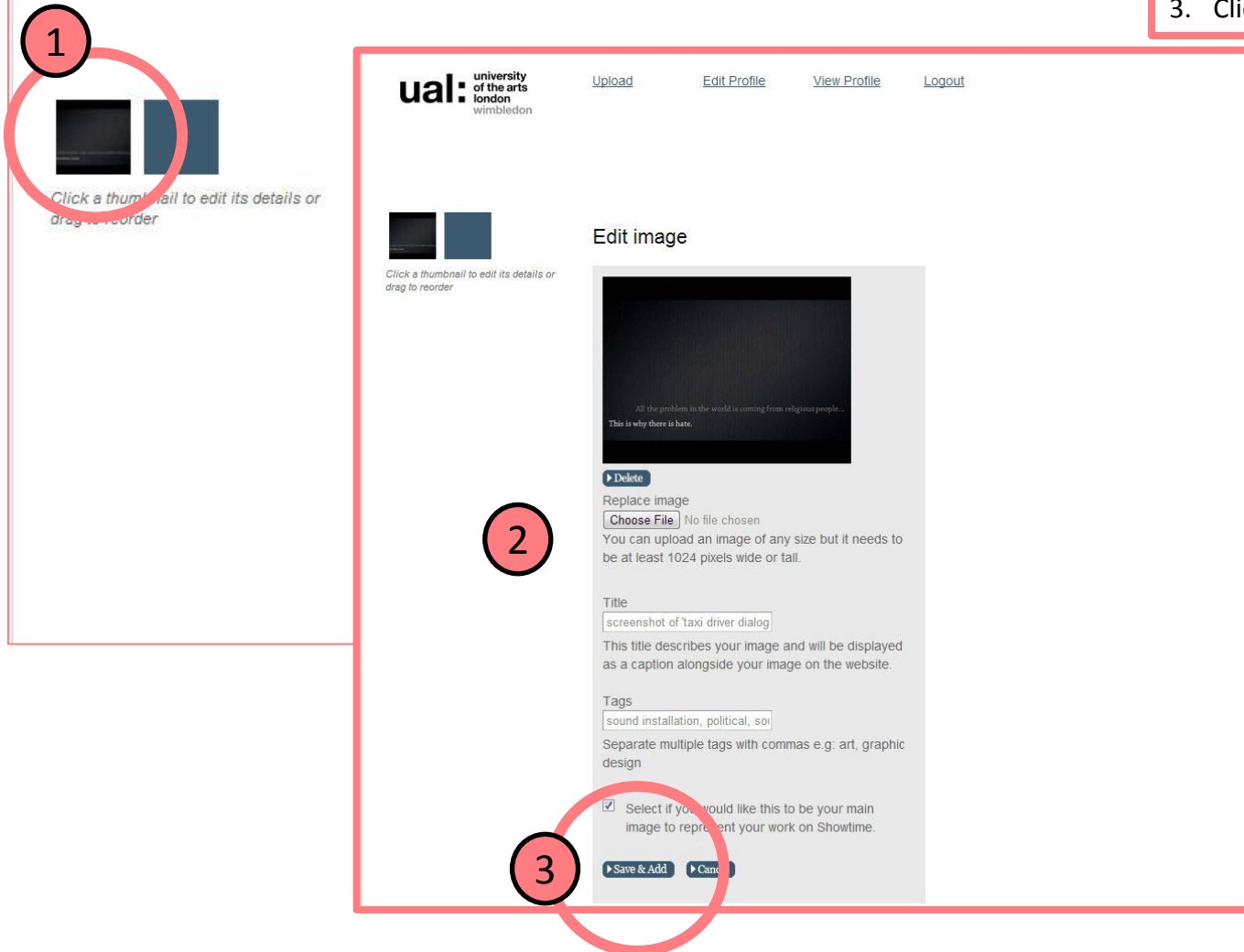
Having problems? Got some feedback? Tell us about it!

# Edit an Image

<http://showtime.arts.ac.uk>

Logged into Showtime

1. Click on a thumbnail image (right side of screen)
2. Enter/edit image details
3. Click **Save & Add** button





# Delete an Image

<http://showtime.arts.ac.uk>

**1**

Click a thumbnail to edit its details or drag to reorder

**2**

**Delete**

**3**

**Are you sure you wish to delete this image?**

**Delete**

Having problems? Got some feedback? Tell us about it!

**Logged into Showtime**

1. Click on a thumbnail image (right side of screen)
2. Click **Delete** button
3. On next screen, "Are you sure?", click **Delete** button to confirm delete.



# Embed a Video

<http://showtime.arts.ac.uk>

← → ↻ showtime.arts.ac.uk/accounts

ual: university of the arts london wimbledon

[Upload](#)

[Edit Profile](#)

[View Profile](#)

[Logout](#)

1



Click a thumbnail to edit its details or drag to reorder

Add your work to Showtime

[Upload an image](#)

[Embed a video \(Youtube or Vimeo\)](#)

[Embed a publication \(issuu.com\)](#)

2

ual: university of the arts london wimbledon

[Upload](#)

[Edit Profile](#)

[View Profile](#)

[Logout](#)

© University of the Arts



Click a thumbnail to edit its details or drag to reorder

Upload your video

YouTube or Vimeo video URL

e.g. <http://vimeo.com/9523916> or

<http://www.youtube.com/watch?v=9HGA4dAHa18>

3

4

[Go](#)

Having problems? Got some feedback? Tell us about it!

*Logged into Showtime*

1. Click [Upload](#) link at top
2. Click [Embed a video \(YouTube or Vimeo\)](#) link
3. Enter (or cut-and-paste) YouTube or Vimeo video URL
4. Click **Go** button

# Embed a Publication

<http://showtime.arts.ac.uk>

← → ↻ showtime.arts.ac.uk/accounts

ual: university of the arts london wimbledon

[Upload](#)

[Edit Profile](#)

[View Profile](#)

[Logout](#)

1



Click a thumbnail to edit its details or drag to reorder

Add your work to Showtime

[Upload an image](#)

[Embed a video \(Youtube or Vimeo\)](#)

[Embed a publication \(issuu.com\)](#)

2

*Logged into Showtime*

1. Click [Upload](#) link at top
2. Click [Embed a publication \(issuu.com\)](#) link
3. Enter (or cut-and-paste) issuu.com URL
4. Click **Go** button

ual: university of the arts london wimbledon

[Upload](#)

[Edit Profile](#)

[View Profile](#)

[Logout](#)



Click a thumbnail to edit its details or drag to reorder

Upload your publication

3

issuu.com URL

No need to use the embed code, just insert the url of your publication e.g. <http://issuu.com/suarts/docs/freshlysqueezed>

4

▶ Go

Having problems? Got some feedback? Tell us about it!

# View your profile

<http://showtime.arts.ac.uk>

← → ↻ showtime.arts.ac.uk/accounts

1

uol: university of the arts london wimbledon

Upload Edit Profile **View Profile** Logout

2

showtime.arts.ac.uk/kelisefranclemont

Kristin Franclemont Butler

BA (Hons) Fine Art: Painting 2013  
Wimbledon College of Art

Course information

All the problem in the world is coming from religious people...  
This is why there is hate.

screenshot of 'taxi driver dialogue, on highway 1, halfway between Jerusalem and Tel Aviv', 2013, sound

DESCRIPTION

Drawing is the primary instrument in my multi-disciplinary practice, along with other means of expression such as animation, installation and object-making. Key areas of interest include relationships; those defined by duality as well as possible spaces in between.

Interest in such things as division/cohesion and The Other/myself, has led me to study artists and art-making under conflict. Current research is centred around Palestine and Israel along with related concerns, both social and political.

See more at: <http://www.kelise.co.uk>

CONTACT

Email Address

SHARE

<http://shwt.me/3kd8>

Like 0 Send Tweet 0

TAGS

sound installation political sound art Palestine israel

Logged into Showtime:

1. Click [View Profile](#) link
2. Your profile page appears

**NOTE: This profile is public, which means you can give out the URL for anybody outside the university to see your degree show work online**

*MORE QUESTIONS?*

<http://showtime.arts.ac.uk>

Stop by again or  
Make an appointment or  
Email me:

**k.franclemontbutler1@arts.ac.uk**